

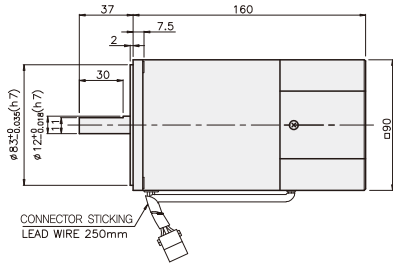
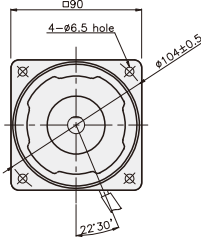
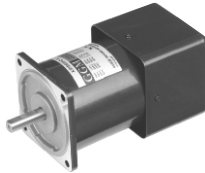
SPEED CONTROL MOTOR – SU SERIES

60W

□90mm

INDUCTION MOTOR

K9IS60F□-SU



SPECIFICATIONS

60W 连续正格，4极

Model	Voltage (V)	Frequency (Hz)	Speed (rpm)	Permissible Torque		Start T. (N·m/kgf·cm)	Current (A)	Condenser (μF)
				1200 rpm (N·m/kgf·cm)	90 rpm (N·m/kgf·cm)			
K9I□60FJ-SU	100	50	90 ~ 1400	0.45/4.5	0.15/1.5	0.24/2.4	2.3	20
			90 ~ 1700					
K9I□60FU-SU	110	60	90 ~ 1700	0.45/4.5	0.15/1.5	0.285/2.85	2	16
	115						2.1	
K9I□60FL-SU	200	50	90 ~ 1400	0.49/4.9	0.14/1.4	0.24/2.4	1.2	5
			90 ~ 1700					
K9I□60FC-SU	220	50	90 ~ 1400	0.49/4.9	0.14/1.4	0.24/2.4	0.91	4
			90 ~ 1700					
	230	50	90 ~ 1400	0.49/4.9	0.14/1.4	0.24/2.4	1	
			90 ~ 1700					
240	50	90 ~ 1400	0.49/4.9	0.14/1.4	0.28/2.8	1.1	4	
		90 ~ 1700						

* □ : 电机轴形状 (S : STRAIGHT, P : PINION)

RATED TORQUE OF GEARHEAD

● 单项 100V/115V

单位 = 上段 : N·m / 下段 : kgf·cm

Model	Ratio	Speed(rpm)																							
		3	3.6	5	6	7.5	9	10	12.5	15	18	20	25	30	36	40	50	60	75	90	100	120	150	180	200
K9I□60F□-SU K9P□B, BF	1200	1.09 10.9	1.31 13.1	1.82 18.2	2.19 21.9	2.73 27.3	3.28 32.8	3.65 36.5	4.10 41.0	4.92 49.2	5.90 59.0	6.56 65.6	7.38 73.8	8.86 88.6	10.63 106.3	11.81 118.1	14.76 147.6	17.71 177.1	20 200	20 200	20 200	20 200	20 200	20 200	20 200
	90	0.36 3.6	0.44 4.4	0.61 6.1	0.73 7.3	0.91 9.1	1.09 10.9	1.22 12.2	1.37 13.7	1.64 16.4	1.97 19.7	2.19 21.9	2.46 24.6	2.95 29.5	3.54 35.4	3.94 39.4	4.92 49.2	5.90 59.0	6.64 66.4	7.97 79.7	8.86 88.6	10.63 106.3	13.29 132.9	15.94 159.4	17.71 177.1

● 单项 200V/240V

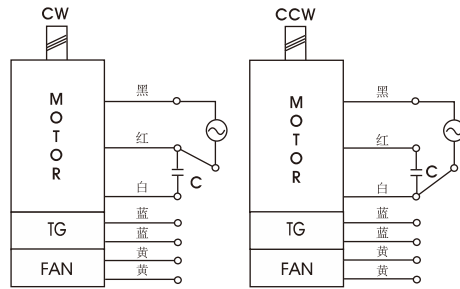
单位 = 上段 : N·m / 下段 : kgf·cm

Model	Ratio	Speed(rpm)																								
		3	3.6	5	6	7.5	9	10	12.5	15	18	20	25	30	36	40	50	60	75	90	100	120	150	180	200	
K9I□60F□-SU K9P□B, BF	1200	200V/220V/230V	1.19	1.43	1.98	2.38	2.98	3.57	3.97	4.47	5.36	6.43	7.14	8.04	9.64	11.57	12.86	16.07	19.29	20	20	20	20	20	20	20
		240V/50Hz	11.9	14.3	19.8	23.8	29.8	35.7	39.7	44.7	53.6	64.3	71.4	80.4	96.4	115.7	128.6	160.7	192.9	200	200	200	200	200	200	200
	200V/220V	1.09	1.31	1.82	2.19	2.73	3.28	3.65	4.10	4.92	5.90	6.56	7.38	8.86	10.63	11.81	14.76	17.71	20	20	20	20	20	20	20	
	230V/60Hz	10.9	13.1	18.2	21.9	27.3	32.8	36.5	41.0	49.2	59.0	65.6	73.8	88.6	106.3	118.1	147.6	177.1	200	200	200	200	200	200	200	
90	200V/220V/230V	0.34	0.41	0.57	0.68	0.85	1.02	1.13	1.28	1.53	1.84	2.04	2.30	2.76	3.31	3.67	4.59	5.51	6.20	7.44	8.27	9.92	12.40	14.88	16.53	
	240V/50Hz	3.4	4.1	5.7	6.8	8.5	10.2	11.3	12.8	15.3	18.4	20.4	23.0	27.6	33.1	36.7	45.9	55.1	62.0	74.4	82.7	99.2	124.0	148.8	165.3	
90	200V/220V	0.39	0.47	0.65	0.78	0.97	1.17	1.30	1.46	1.75	2.10	2.33	2.62	3.15	3.78	4.20	5.25	6.30	7.09	8.50	9.45	11.34	14.17	17.01	18.90	
	230V/60Hz	3.9	4.7	6.5	7.8	9.7	11.7	13.0	14.6	17.5	21.0	23.3	26.2	31.5	37.8	42.0	52.5	63.0	70.9	85.0	94.5	113.4	141.7	170.1	189.0	

- * 减速机。中间减速机为另卖品。
- * 减速机品名中 □里 为减速机。
- * 色是与电机同一方向，其它为反方向。
- * 表 比此减速比还要高的减速比时可以使用中间减速机。此时的许容扭矩为 20N·m/200kgf·cm。
- * 转速以电机同期转速 (50Hz : 1500RPM 60Hz : 1800RPM) 为基准除以减速比计算出来的。实际转速根据负载的大小比表上的数据小2~20%。

GEARHEAD

CONNECTION DIAGRAMS



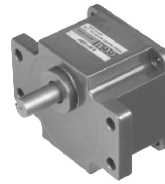
旋转方向由出力轴侧看时

DIMENSIONS

K9P□B

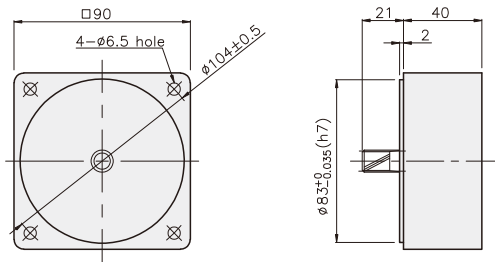


K9P□BF

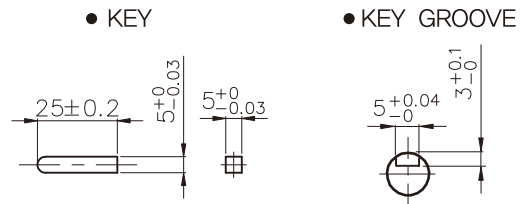


DECIMAL GEARHEAD

K9P10BX

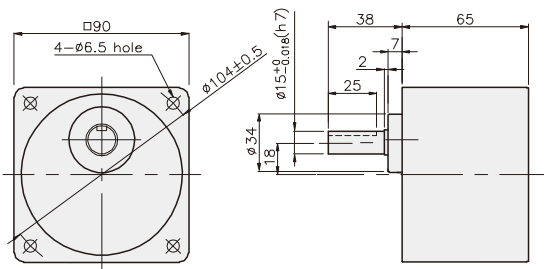


KEY SPEC

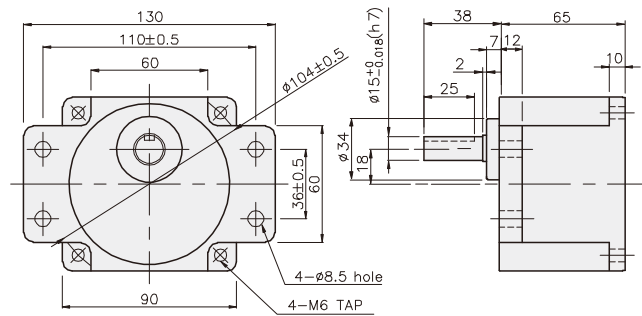


GEARHEAD

K9P□B



K9P□BF



SPEED CONTROL MOTOR
- SU SERIES

GEARHEAD

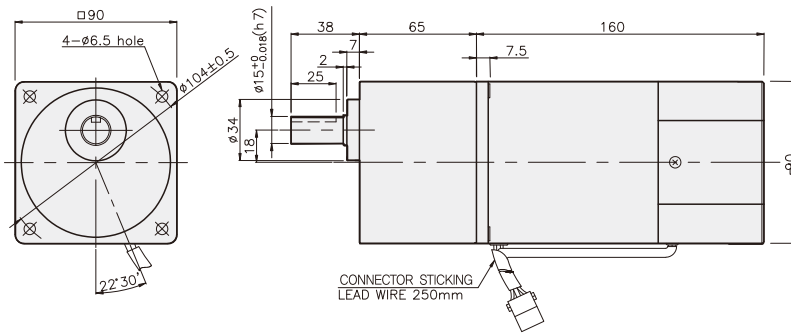
DIMENSIONS

K9IP60F□-SU + K9P□B

K9IP60F□-SU + K9P□BF



K9IP60F□-SU + K9P□B



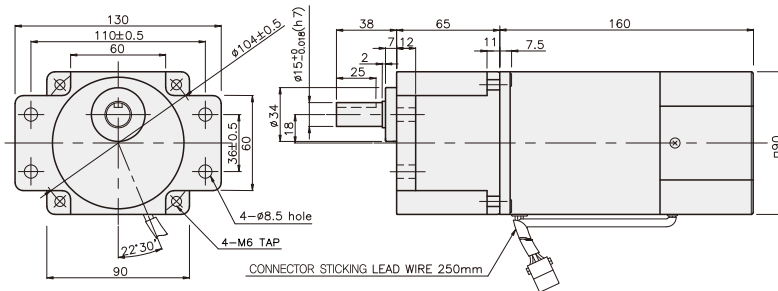
尺寸表

编号	应用型号	安装螺丝
01	K9P3~200B	M6 P1,0 X 95
02	K9P10BX	M6 P1,0 X 140

重量

PART		WEIGHT(kg)
MOTOR		3,06
DECIMAL GEAR HEAD		0,62
GEAR HEAD	K9P3~10B	1,22
	K9P12,5~20B	1,32
	K9P25~60B	1,42
	K9P75~200B	1,45

K9IP60F□-SU + K9P□BF



尺寸表

编号	应用型号	安装螺丝
01	K9P3~200BF	M6 P1,0 X 20
02	K9P10BX	M6 P1,0 X 65

重量

PART		WEIGHT(kg)
MOTOR		3,58
DECIMAL GEAR HEAD		0,62
GEAR HEAD	K9P3~10BF	1,22
	K9P12,5~20BF	1,30
	K9P25~60BF	1,42
	K9P75~200BF	1,44